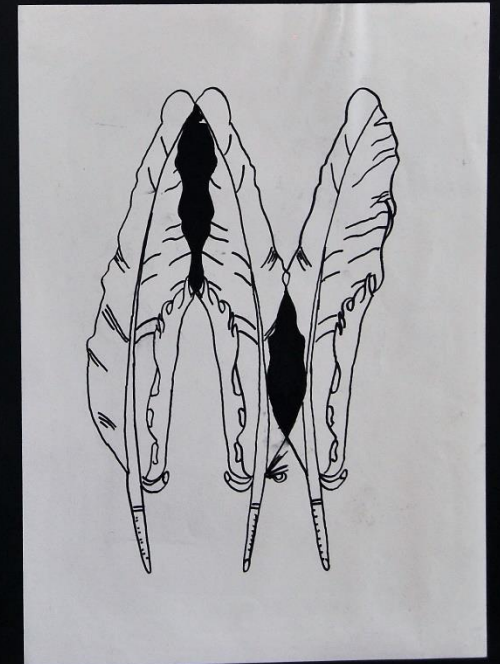
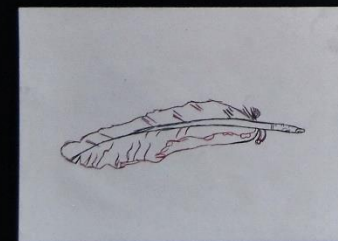
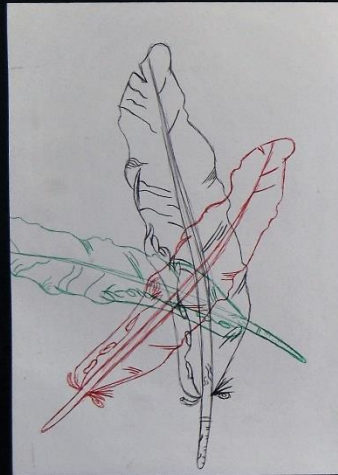
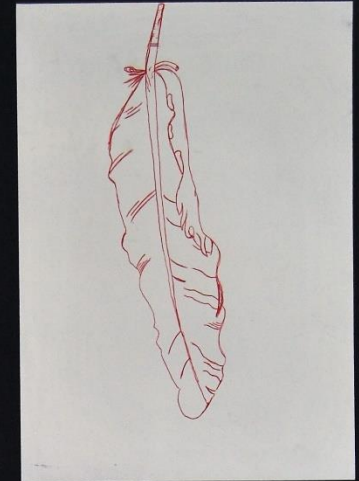
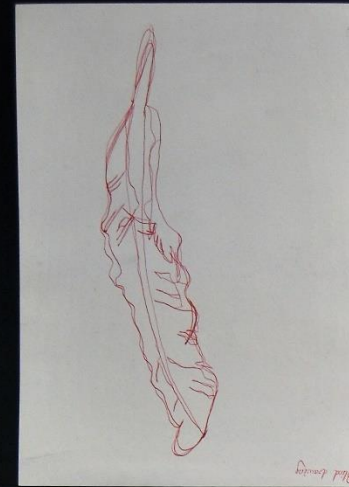
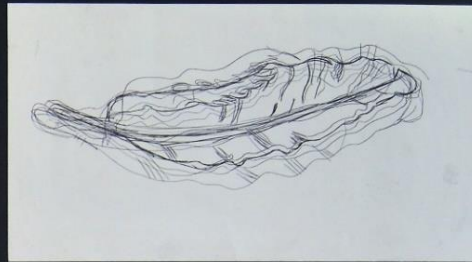


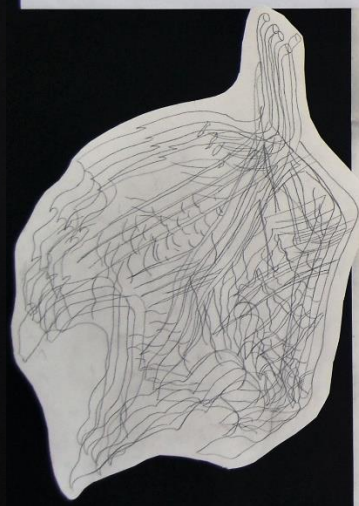
ART at Ernest Bevin College

An investigation of line in natural forms, taking inspiration from artists Gary Hume, Andy Warhol, Benedicte Gele and Rohini Devasher. Using a combination of pencil, biro, pen and ink on paper.



ART at Ernest Bevin College

Experimentation inspired by the intricate detail of Rohini Devasher's artwork depicting biological forms, as well as the fluidity of Benedicte Gele's equine paintings.

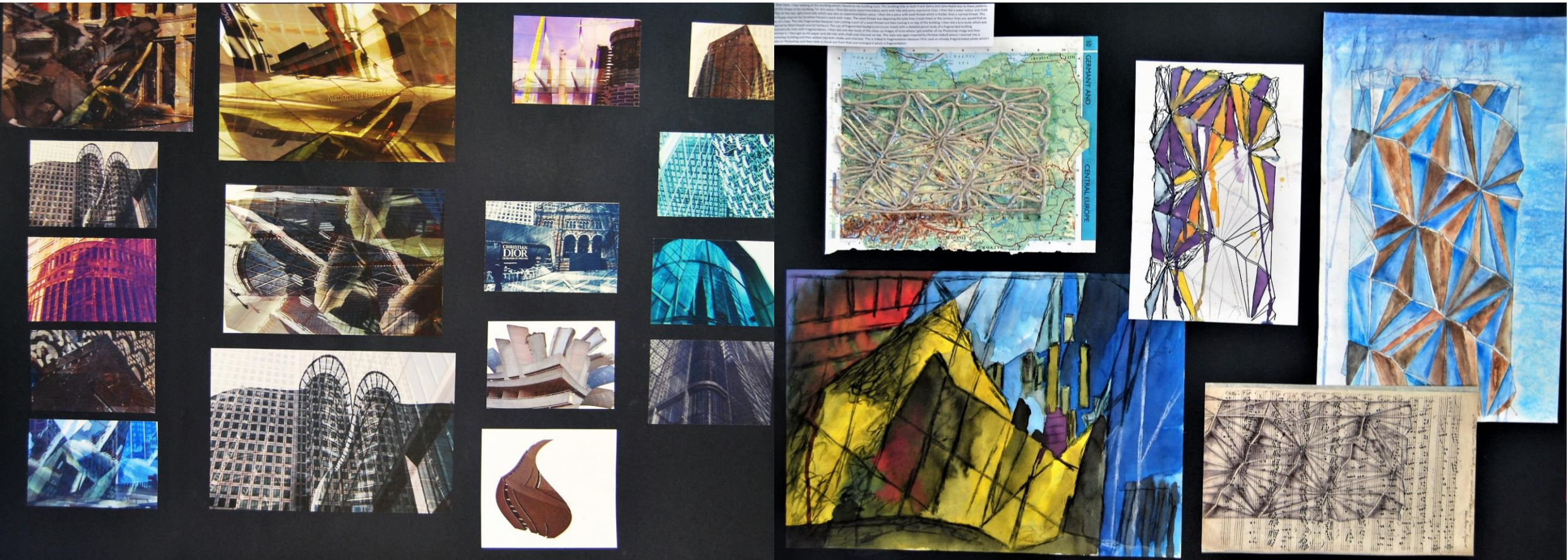


ART at Ernest Bevin College



A final outcome using white and coloured pencil, with acrylic paint on black paper.

ART at Ernest Bevin College



Photographic exploration of London architecture using Photoshop to digitally manipulate each image. Then further experimentation using chalk and watercolour, biro on sheet music, and wool thread on a map. This last study was inspired by the collection of work by Jonathon Parson, titled 'Map Works'.

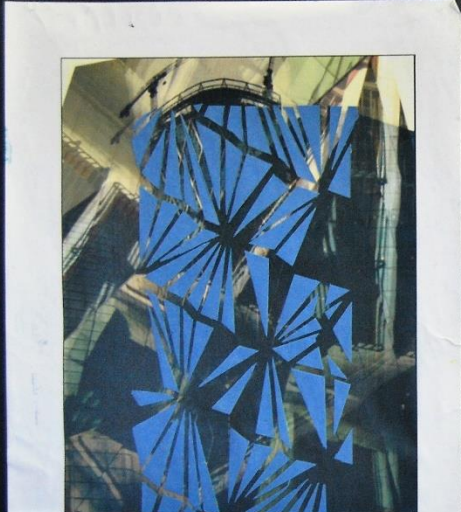
A-Level Work

ART at Ernest Bevin College

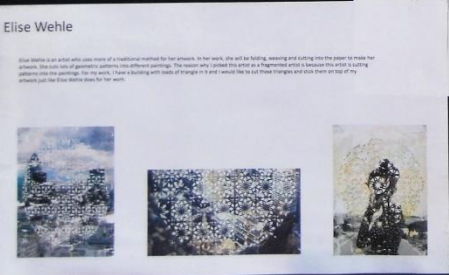
Experimentation with geometrically cut coloured paper and photography, inspired by the works of Elise Wehle and Ed Fairburn. Wehle cuts geometric patterns into her works, while Fairburn creates delicate portraits on top of maps.



These are the patterns with their dimensions that I cut out and show this image. You can see the original pattern of each of the patterns and colors. This was also inspired by Elise Wehle when she uses patterns in her work. This page links to her website because this is the reference for her work of the patterns. The most beautiful fragments of my process work have been in my inspiration.

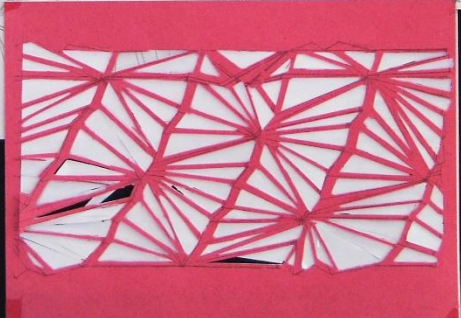


These were one of the things I made when working on my house. I got the inspiration from a lot of different things and I was inspired by the way that the patterns were used in the buildings. I was inspired by the way that the patterns were used in the buildings. I was inspired by the way that the patterns were used in the buildings.



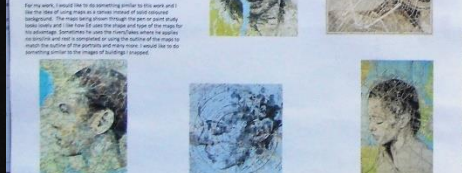
Elise Wehle

Elise Wehle is an artist who uses a traditional method for her work. In her work, she will be taking, weaving and stitching the paper to make her patterns. She uses lots of geometric patterns into different settings. The reason why I liked this artist is because this artist is cutting patterns into her artwork. In my work, I have a building with lots of things in it and I would like to cut these things and use them as one of the things that Elise Wehle does for her work.



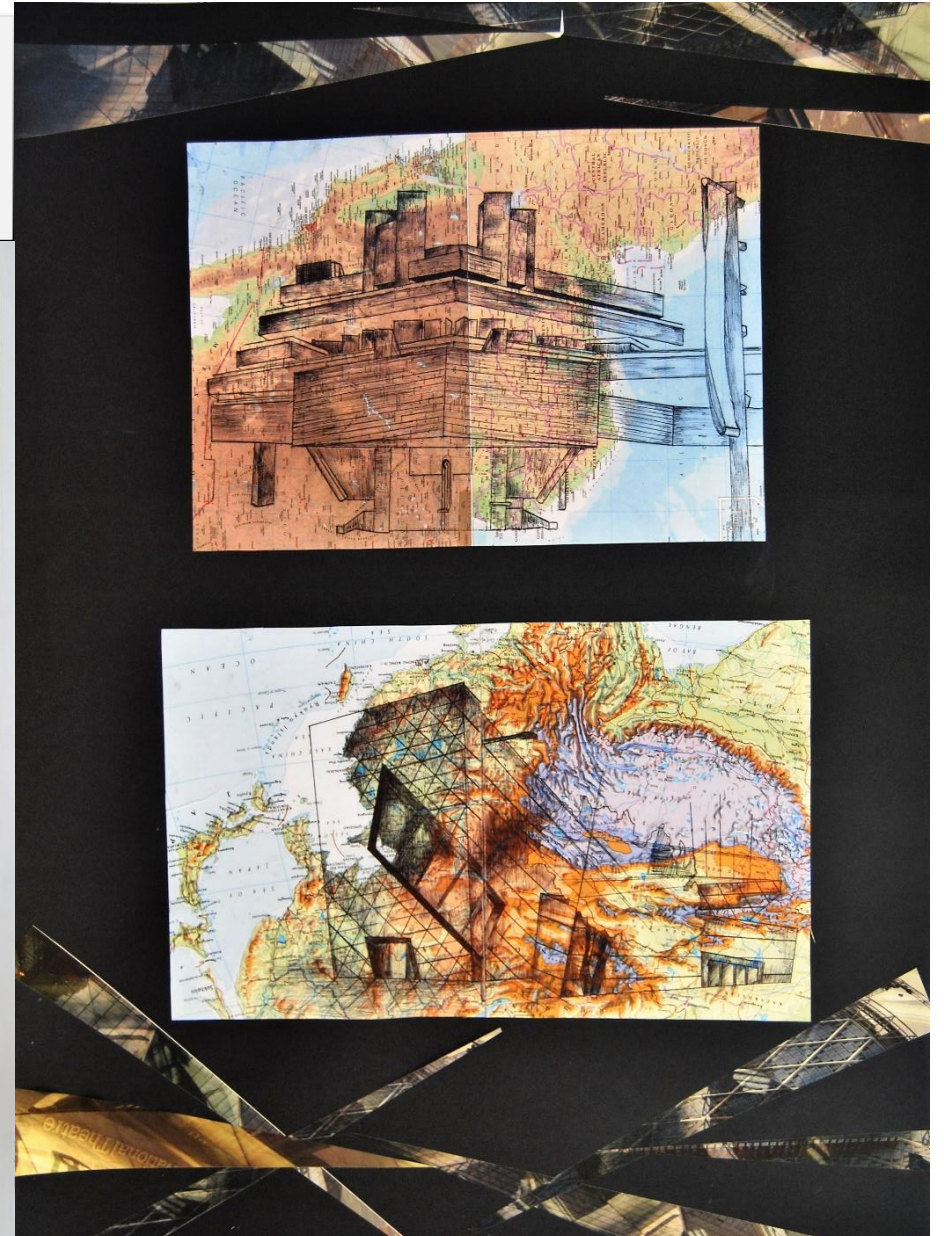
Ed Fairburn

Ed Fairburn is an artist who uses a traditional method for his work. In his work, he will be taking, weaving and stitching the paper to make his patterns. He uses lots of geometric patterns into different settings. The reason why I liked this artist is because this artist is cutting patterns into his artwork. In my work, I have a building with lots of things in it and I would like to cut these things and use them as one of the things that Ed Fairburn does for his work.



ART at Ernest Bevin College

Final outcomes using cut map imagery with biro, on coloured and black paper.



A-Level Work

ART at Ernest Bevin College

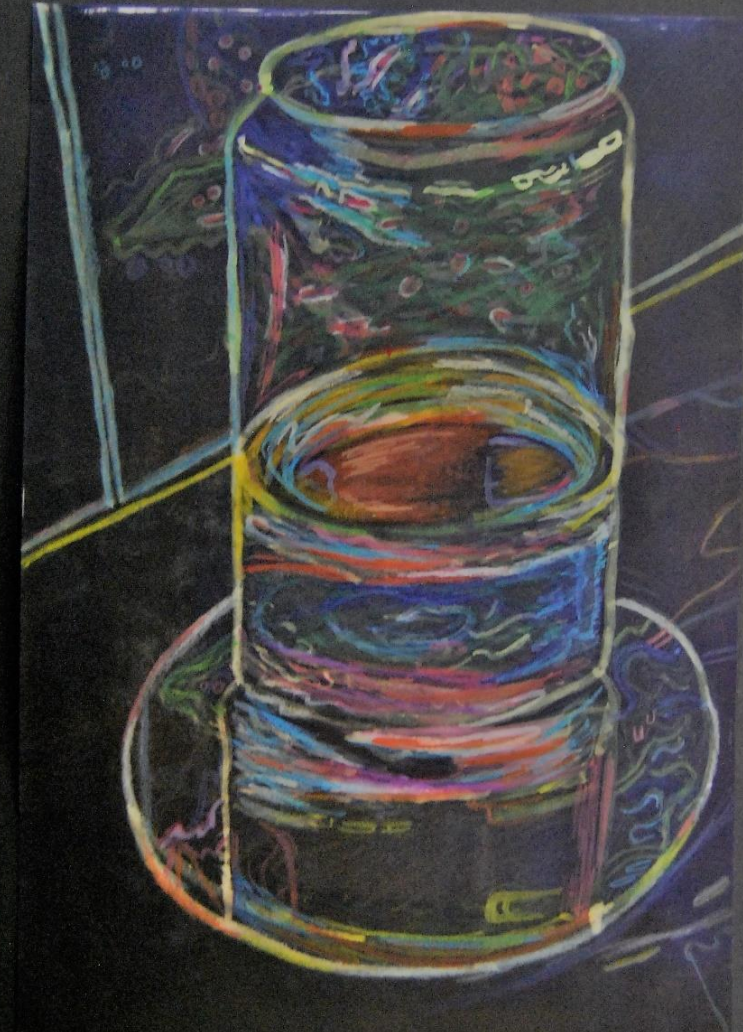
An extended investigation into light refraction and reflection of water. Below are experimentations on still life drawing using a mix of biro, fine liner, water, chalk, and watercolour.



ART at Ernest Bevin College

Below is a lino printed image of the glass of water using three colours.

To the direct right is a digital manipulation of a photograph of the glass, and next a chalk study of this manipulated image on black paper.



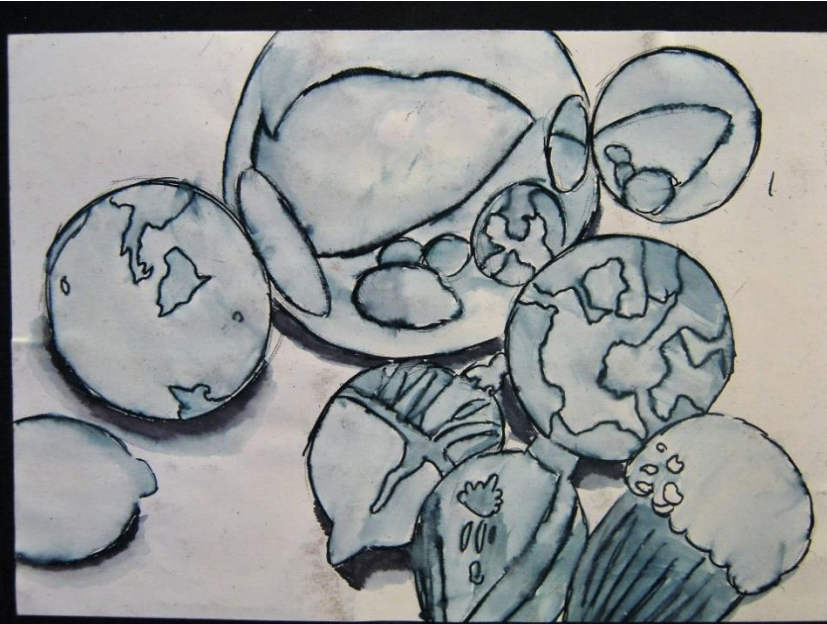
ART at Ernest Bevin College



A final outcome using gouache to depict the reflection and refraction of the water

ART at Ernest Bevin College

A set of mixed medium studies of tree ornaments and marbles; using pencil, fine liner and water, and biro on cartridge paper. Exploring the use of line and tone.



ART at Ernest Bevin College

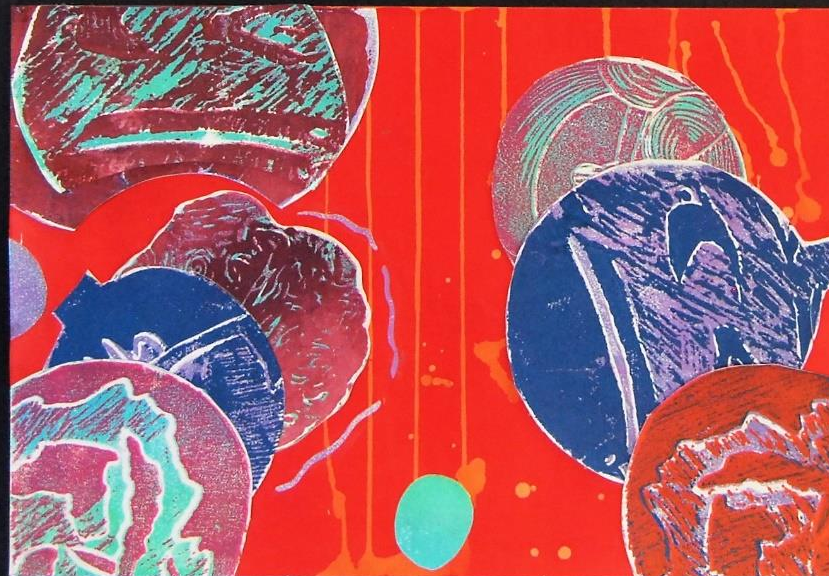


On the left, a digitally manipulated photograph of marbles sitting on a reflective surface, then reproduced in the middle using chalks on black paper.

On the right is a lino printed image of tree ornaments in 5 colours.

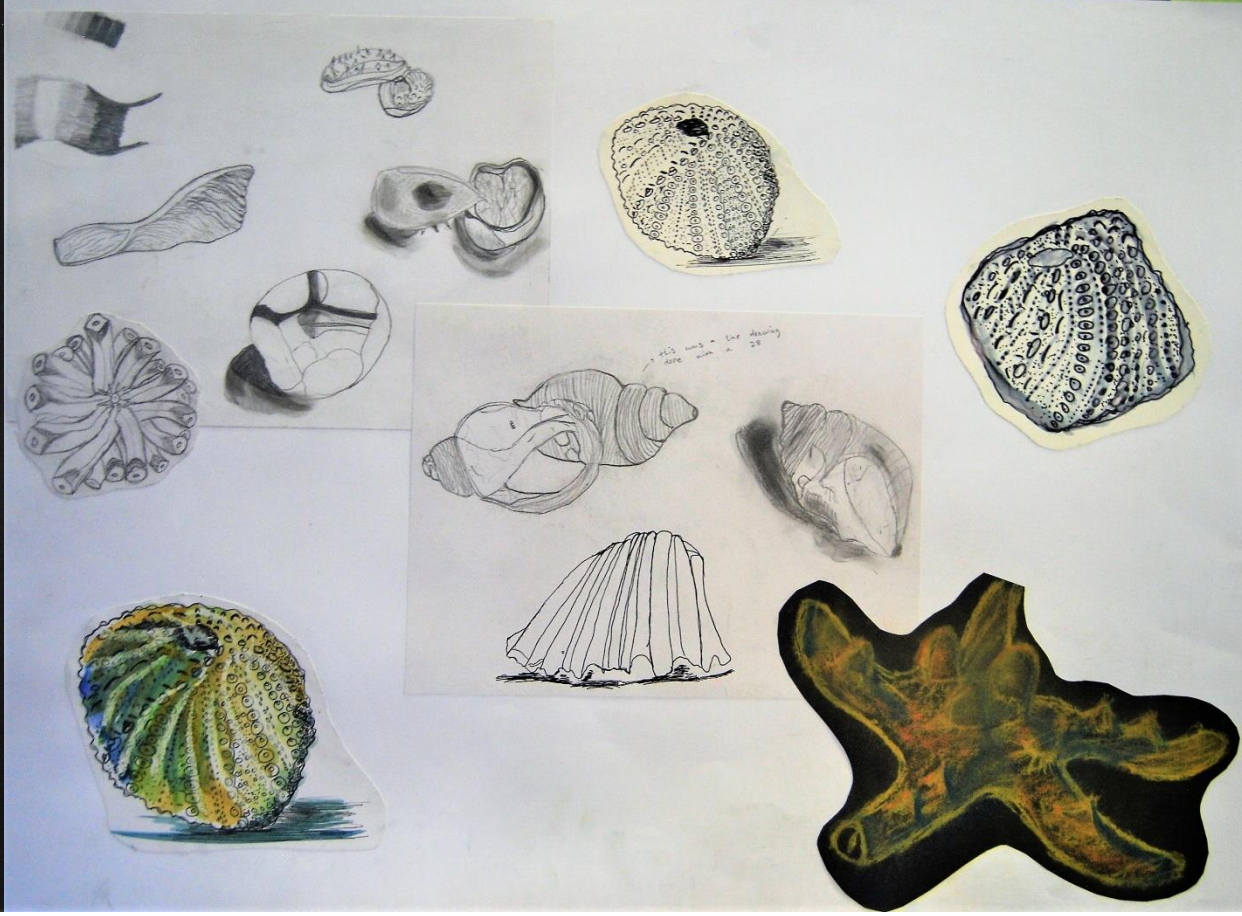
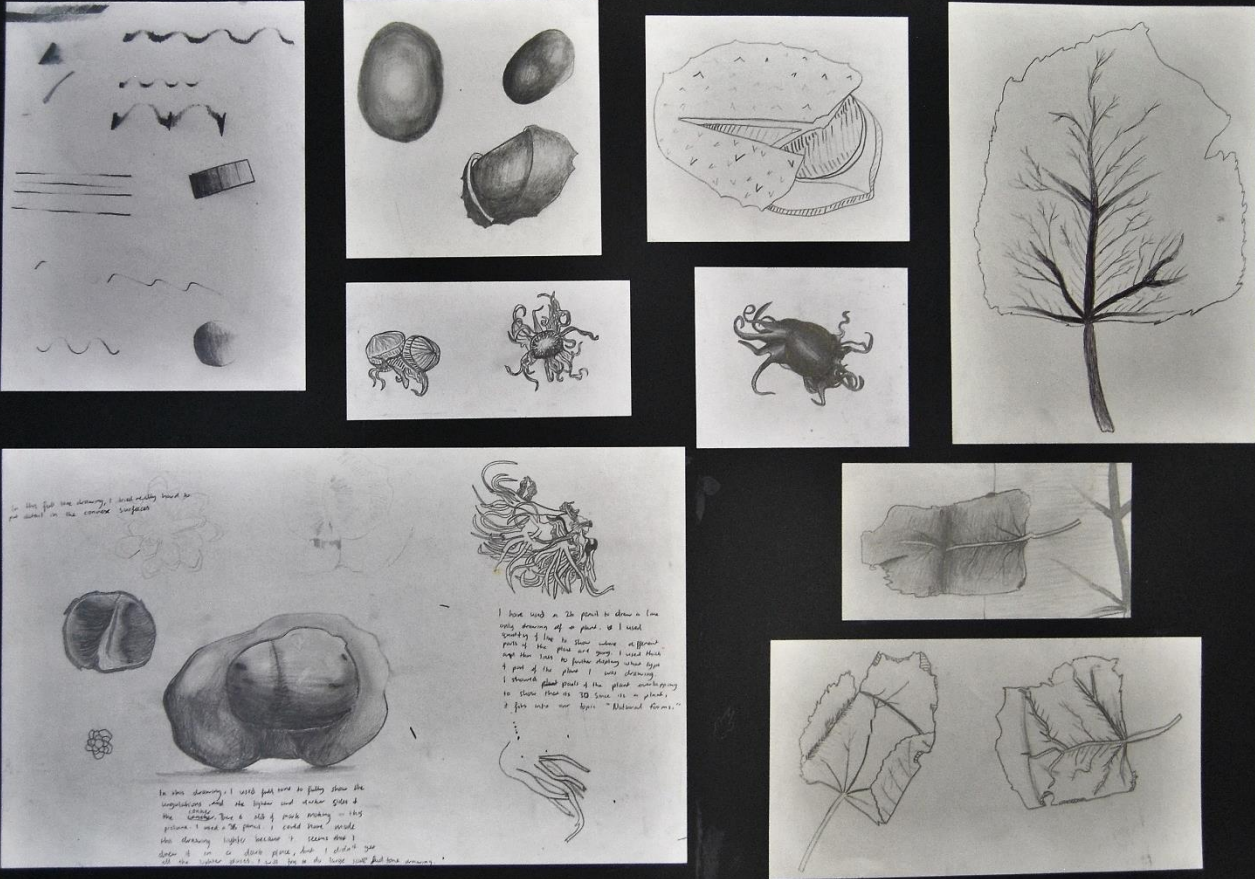
ART at Ernest Bevin College

Mixed media experimentation using the images of marbles and ornaments. Tissue paper and biro, chalk and charcoal, watercolour, and lino printing.



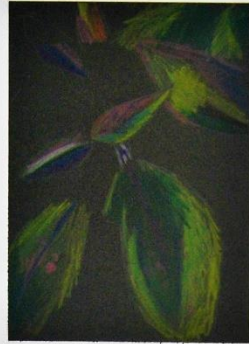
ART at Ernest Bevin College

Pencil studies of biological forms, exploring the use of line, tone, texture and shape. On the right further exploration using pencil, biro, fine liner, watercolour and chalk.



ART at Ernest Bevin College

Media and technique experimentation as observational drawings, studying the form of flowers. Biro, fine liner, watercolour, chalk, monoprint, and oil pastel.



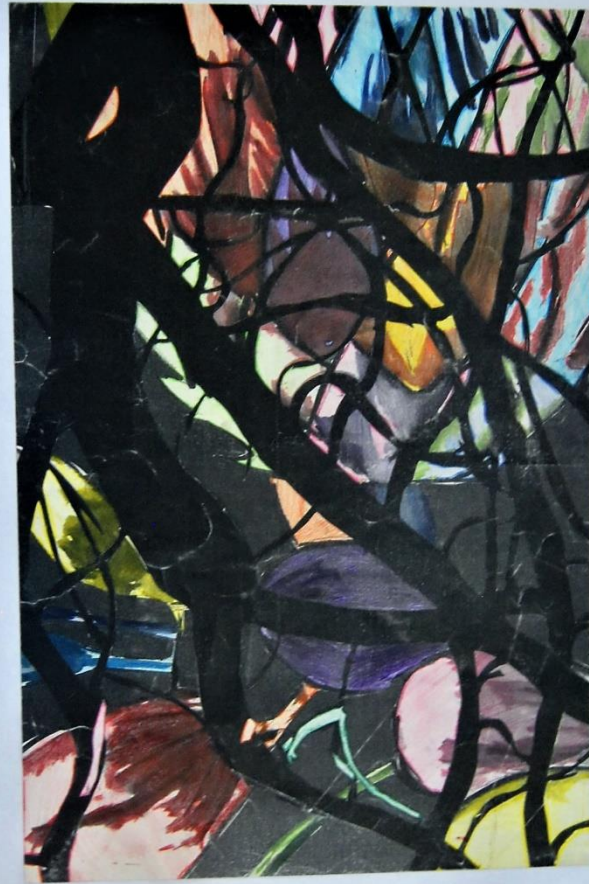
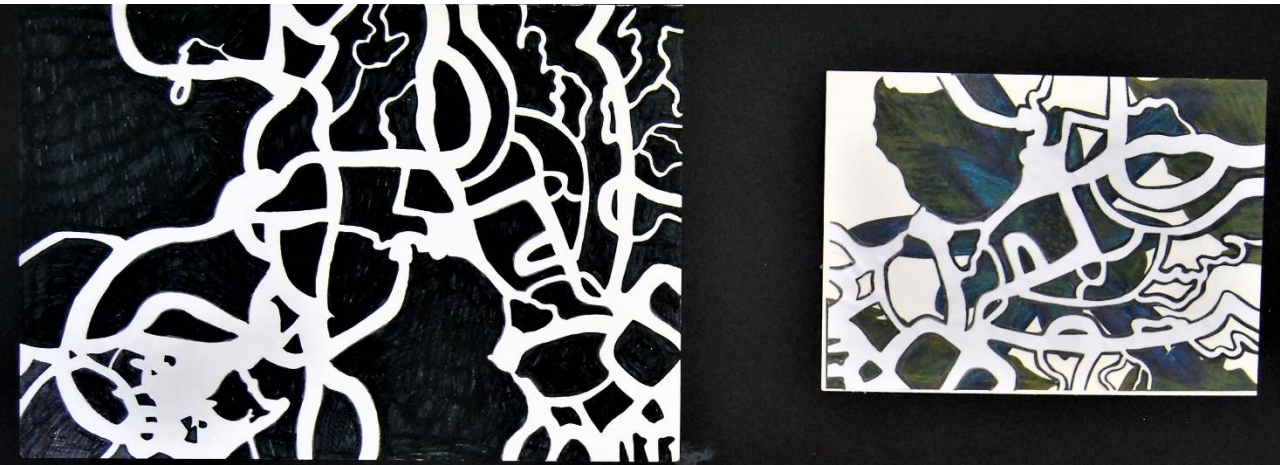
In the image above I done a monoprint, where I done lots of mark-making to hopefully give it more tone and a bit more detail.



In both of these images I used a variety of colours to make it more interesting, I use dark colours such as purple and blue to elaborate on the dark tones, and light colours such as green to convey the light areas.



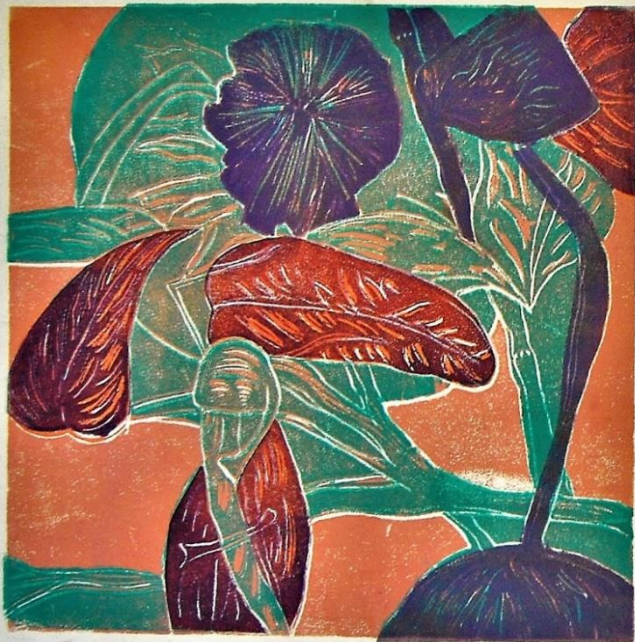
ART at Ernest Bevin College



Experimentation of shape and colour by making use of negative space and line. Using felt pen, coloured pencil, acrylic paint, watercolour paint, and the layering of black paper.

ART at Ernest Bevin College

Below are two outcomes from lino printing, with pieces cut out and reapplied, looking at the use of line and colour in depicting biological forms. To the right is another depiction of plant life, using gouache paint to explore line and colour.



ART

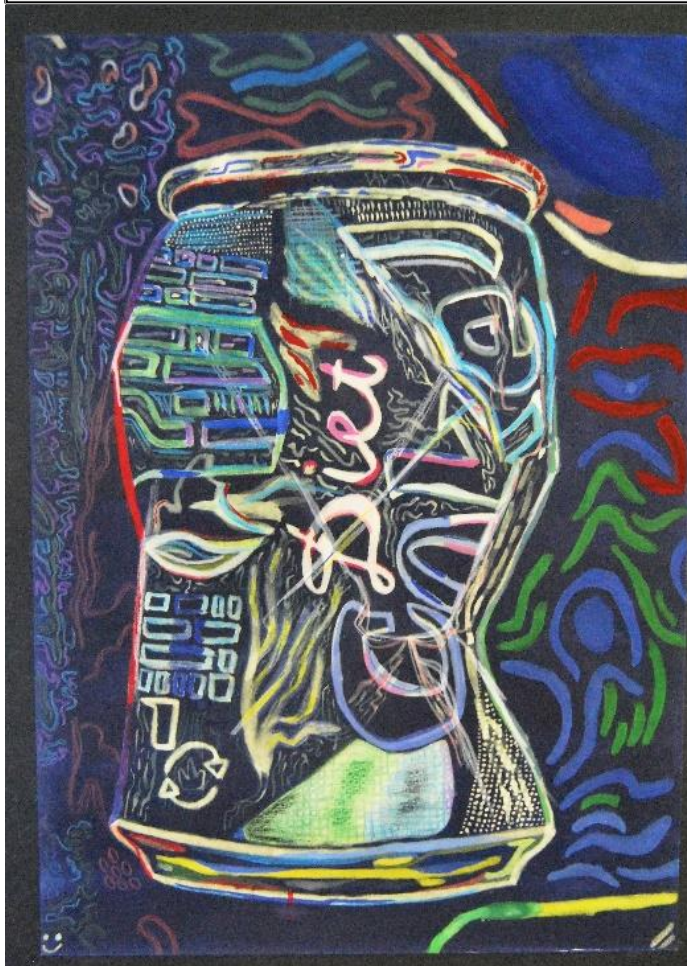
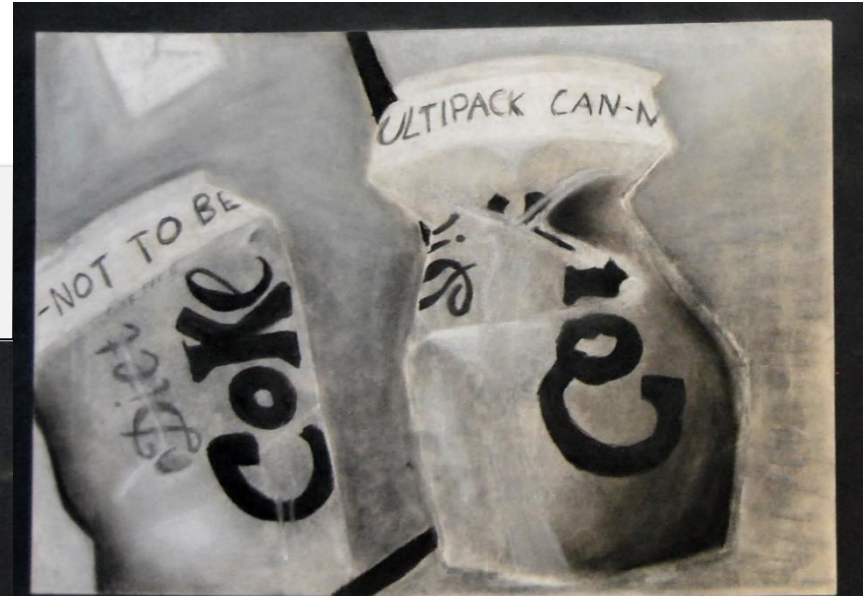
at Ernest Bevin College



An investigation into still life drawing, taking inspiration from artist Chris Morgan's work with Coke cans, he depicts still life imagery using oil paint on board or canvas. Taking pictures of crushed cans, against reflective and patterned backgrounds, then making observational drawings of the cans using pencil, biro, and fine liner with water.

ART at Ernest Bevin College

Further studies of the cans in a range of media:
coloured pencil on black paper, coloured chalk,
chalk and charcoal, and biro and tissue paper



ART at Ernest Bevin College



On the left, an acrylic painting of the Cherry Coke can. In the middle a line drawn overlay on tracing paper, with a gouache coloured painting below. On the right a pair of lino printed outcomes based upon the Rubicon label and package design.